

The figure displays three chromatograms related to the analysis of polycyclic aromatic hydrocarbons (PAHs) in sediment.

Top Chromatogram: A gas chromatogram showing detector response (Y-axis, 1000 to 5000) versus time (X-axis, 0.00 to 80.00 minutes). The title is "09169710.D\FID1A". Key peaks are labeled: "Sur." (Surfactant), "C₁₇", "C₂₉", and "I.S." (Internal Standard).

Middle Chromatogram: An "Analyte Profile Histogram" for "97C1341: 97-0-F4-02-00-PHC-S SEDIMENT". The Y-axis is "Concentration ug/Kg." (0 to 35) and the X-axis is "Compounds". The histogram shows the relative concentrations of various PAHs, with the highest concentrations observed for C₁₇, C₂₉, and I.S.

Bottom Chromatogram: A mass spectrum showing abundance (Y-axis, 0 to 1400) versus time (X-axis, 36.00 to 58.00 minutes). The title is "Ion 191.00 (190.70 to 191.70): DZ2453.D". Key peaks are labeled: T15, T18, T19, T21, T22, and T29.

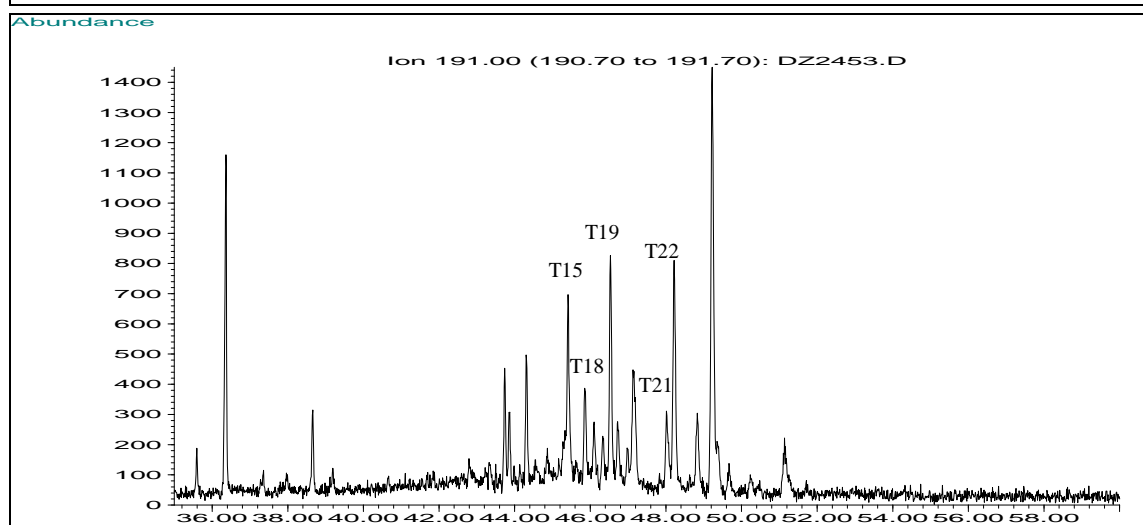
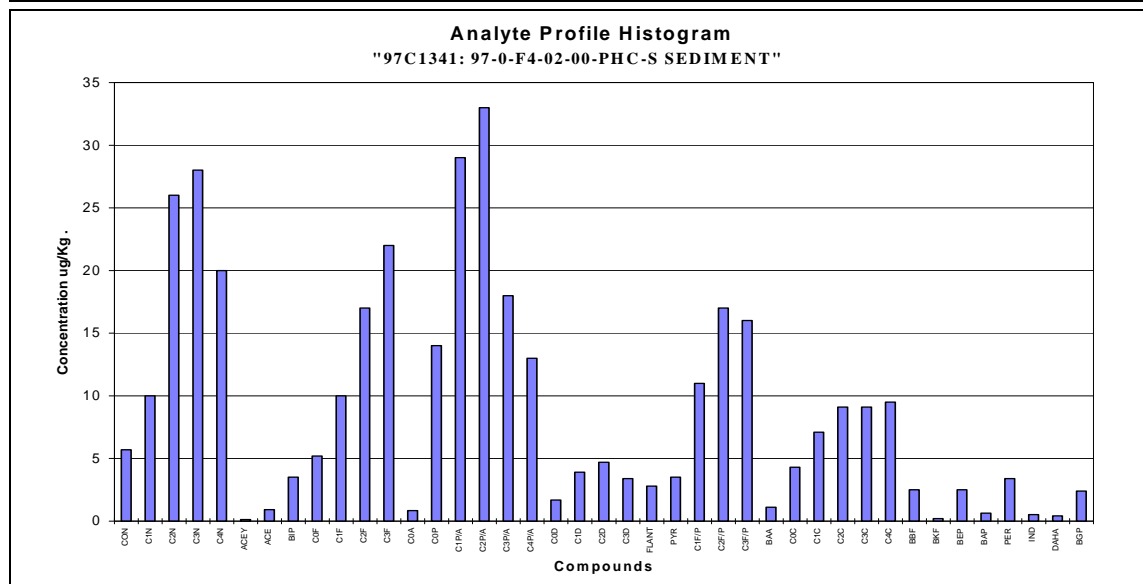
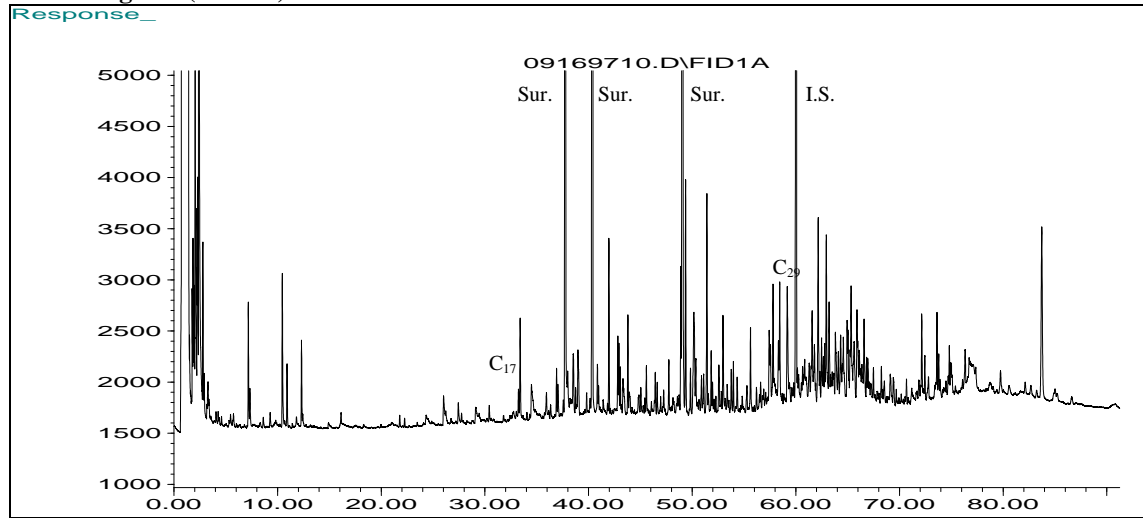


Figure 3-20: Zone 0, Station F4, Surface Sediment Sample 97-0-F4-02-00-PHC-S (rep 02) Results: GC/FID chromatogram (top), PAH distribution plot (middle), Triterpane extracted ion chromatogram (bottom).

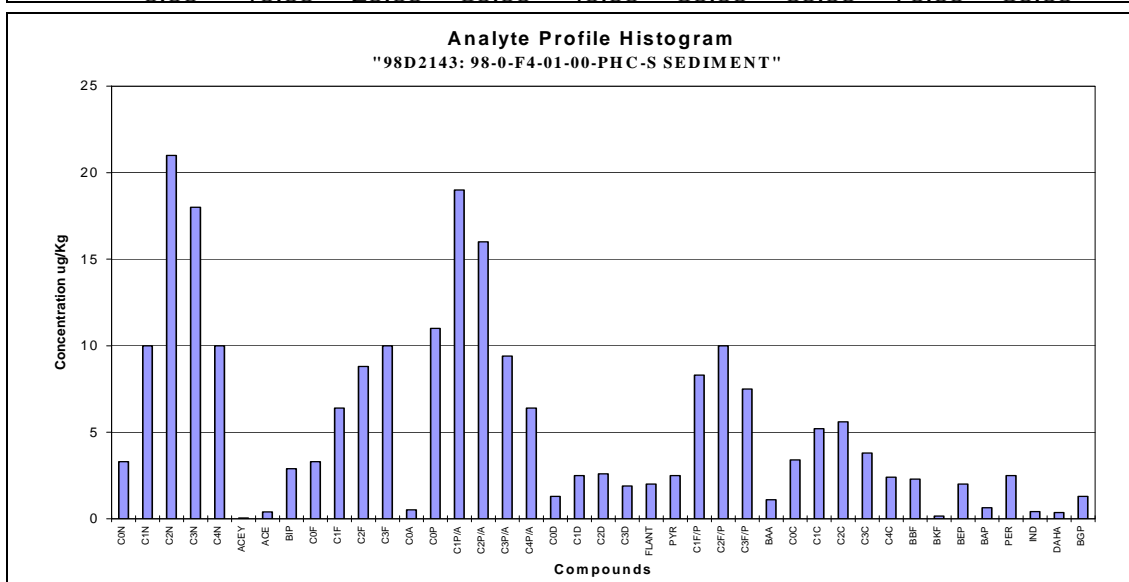
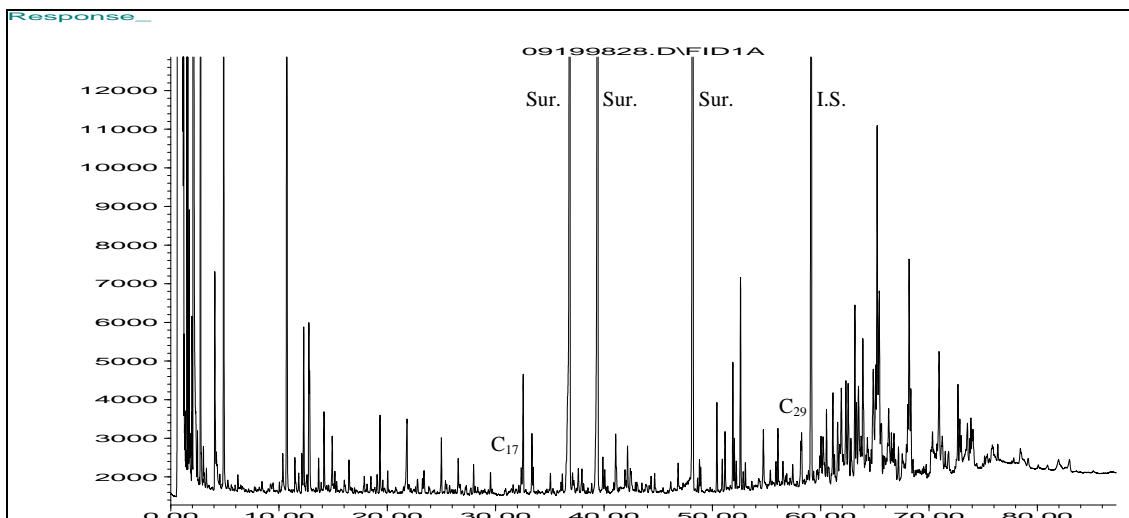


Figure 3-25: Zone 2, Station R8, Surface Sediment Sample 97-2-08-01-00-PHC-S Results: GC/FID chromatogram (top), PAH distribution plot (middle), Triterpane extracted ion chromatogram (bottom).

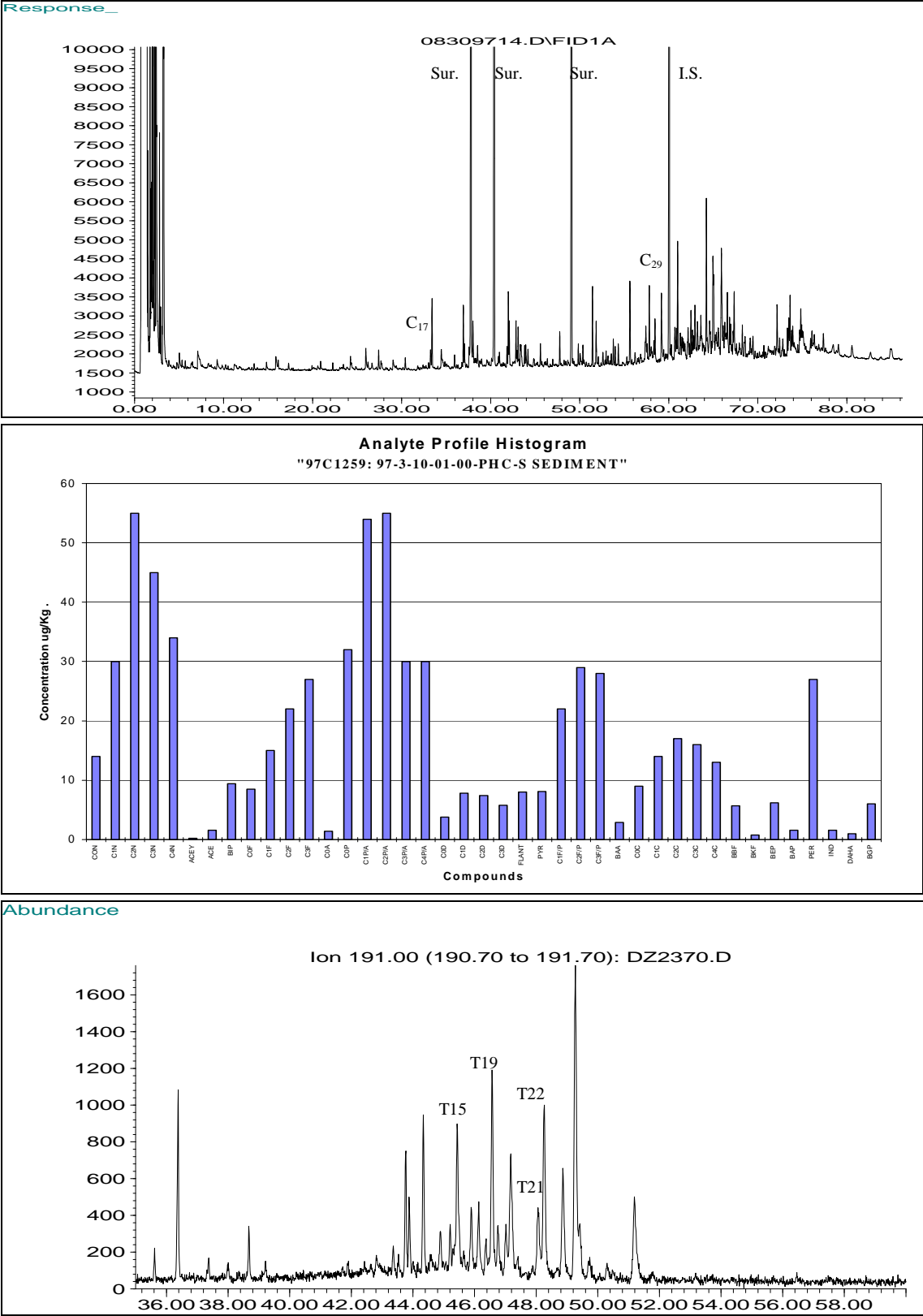


Figure 3-26: Zone 3, Station R10, Surface Sediment Sample 97-3-10-01-00-PHC-S Results: GC/FID chromatogram (top), PAH distribution plot (middle), Triterpane extracted ion chromatogram (bottom).

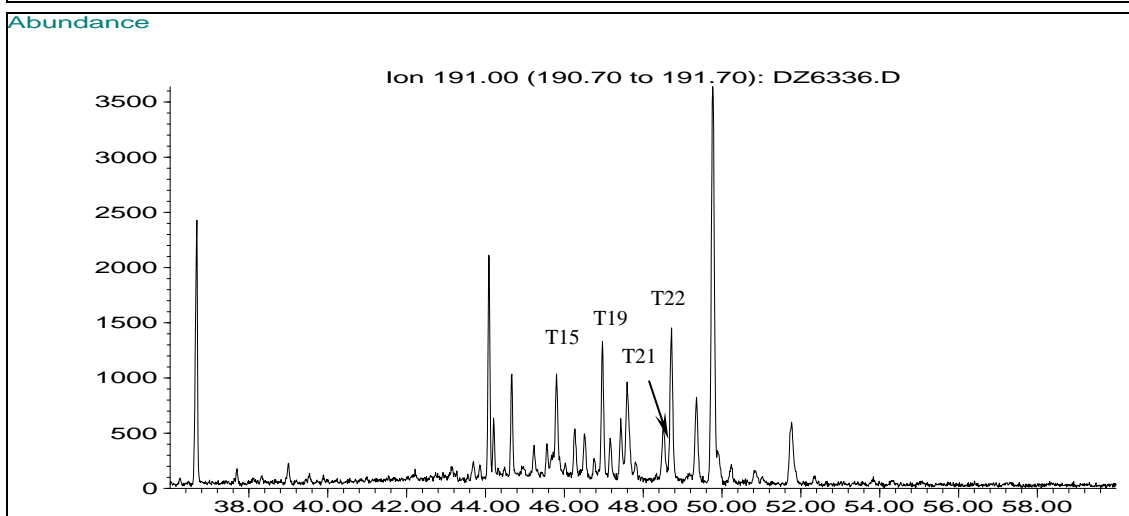
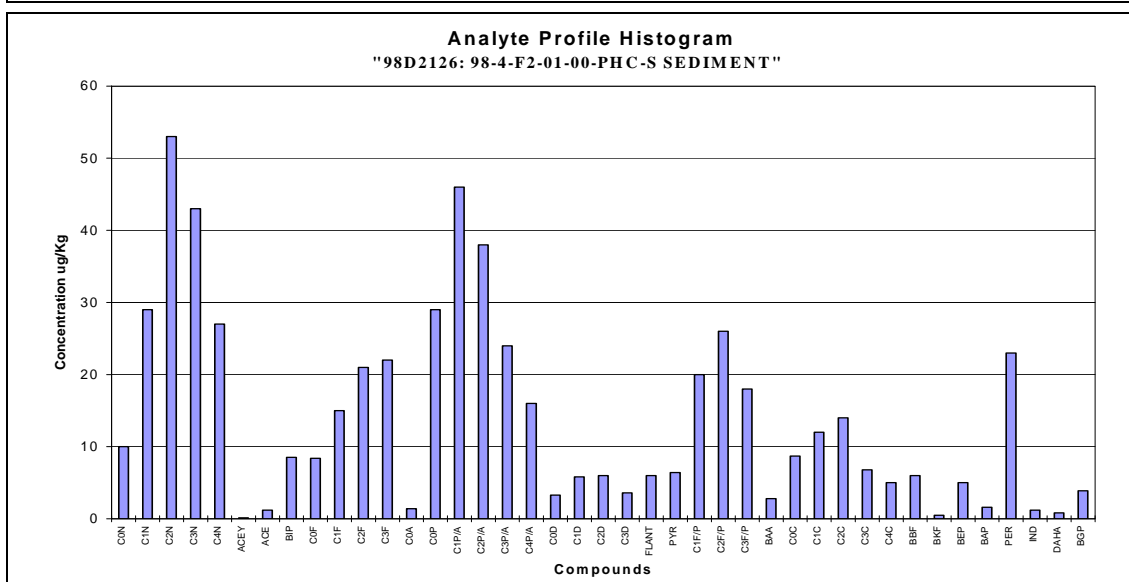
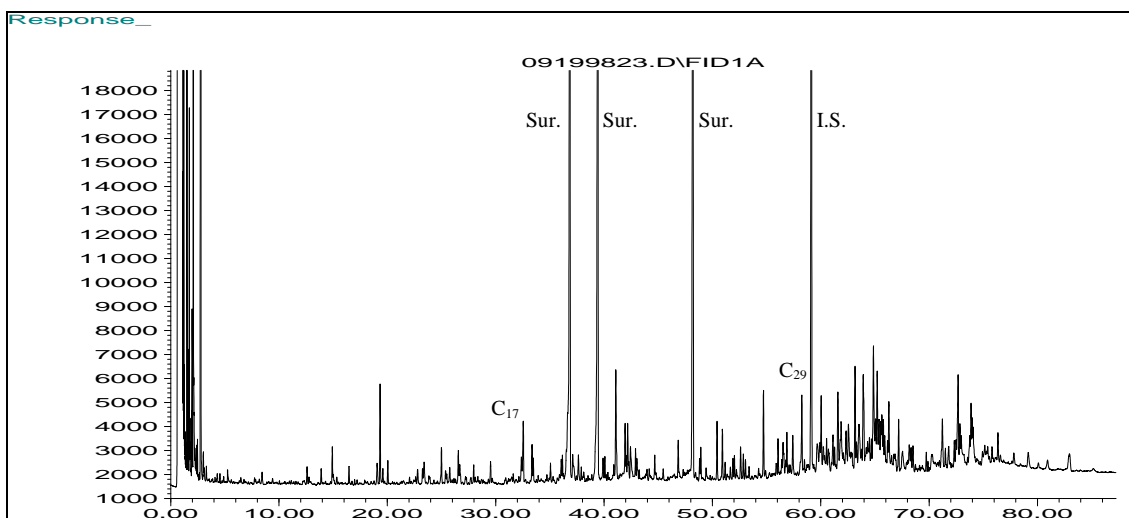


Figure 3-27: Zone 4, Station 2, Surface Sediment Sample 98-4-F2-01-00-PHC-S: GC/FID chromatogram (top), PAH distribution plot (middle), Triterpane extracted ion chromatogram (bottom).